

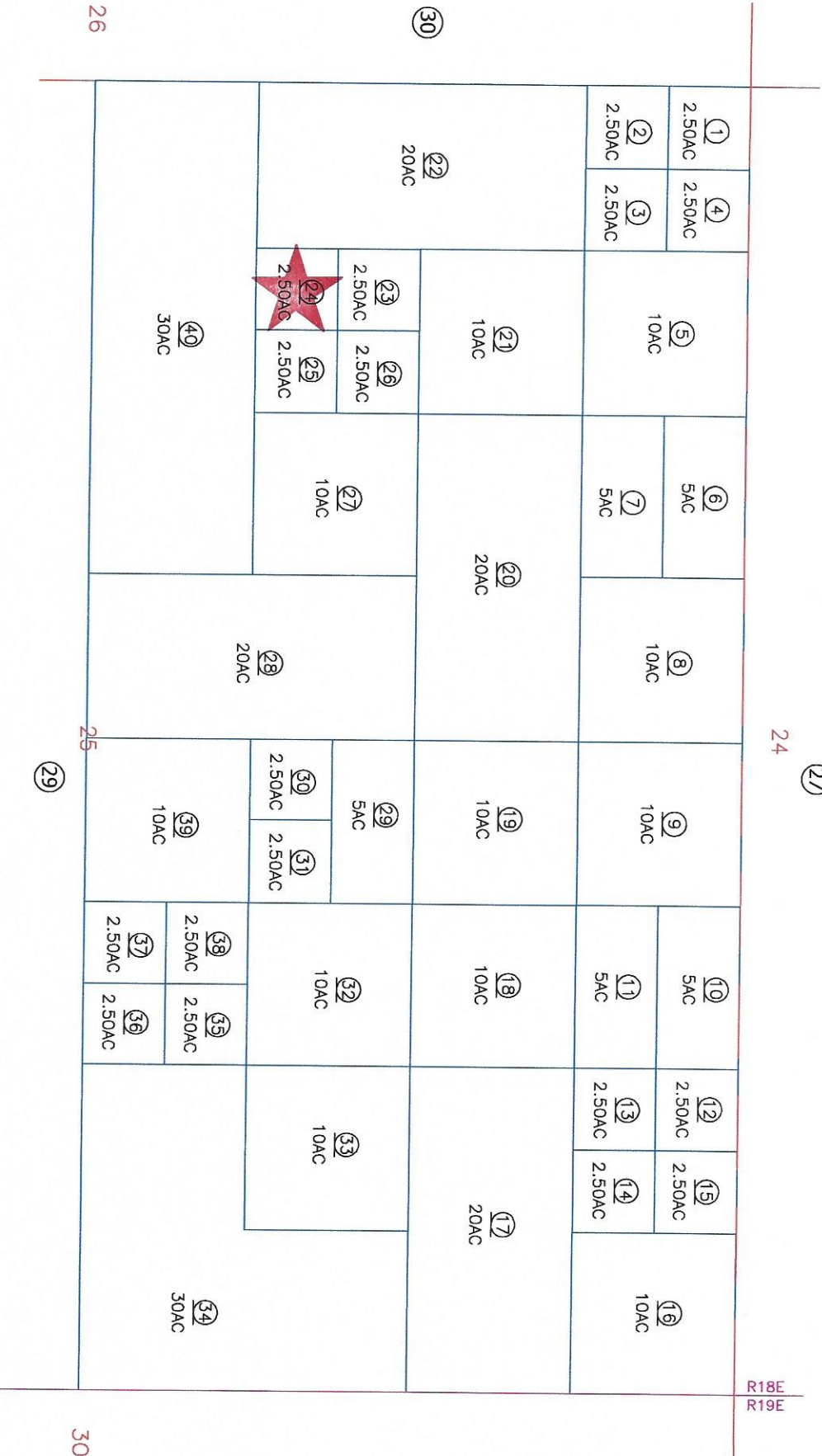
N 1/2 SEC 25 T9S R18E

Tax Area Code
94-002

60-28

24 (27)

R18E
R19E



From 5-88
7-7-82 RW

DISCLAIMER:
THIS IS NOT AN OFFICIAL MAP.
THIS MAP WAS CREATED FOR THE IMPERIAL COUNTY
ASSESSOR, FOR THE SOLE PURPOSE OF AIDING IN
THE PERFORMANCE OF THE DUTIES OF THE ASSESSOR.
ANY ERRORS OR OMISSIONS IN THIS MAP ARE NOT
THE RESPONSIBILITY OF THE COUNTY OF IMPERIAL
OR THE ASSESSOR. (REV. & TAX. CODE SEC.327)



Assessor's Map Bk 60-Pg. 28
County of Imperial, Calif.