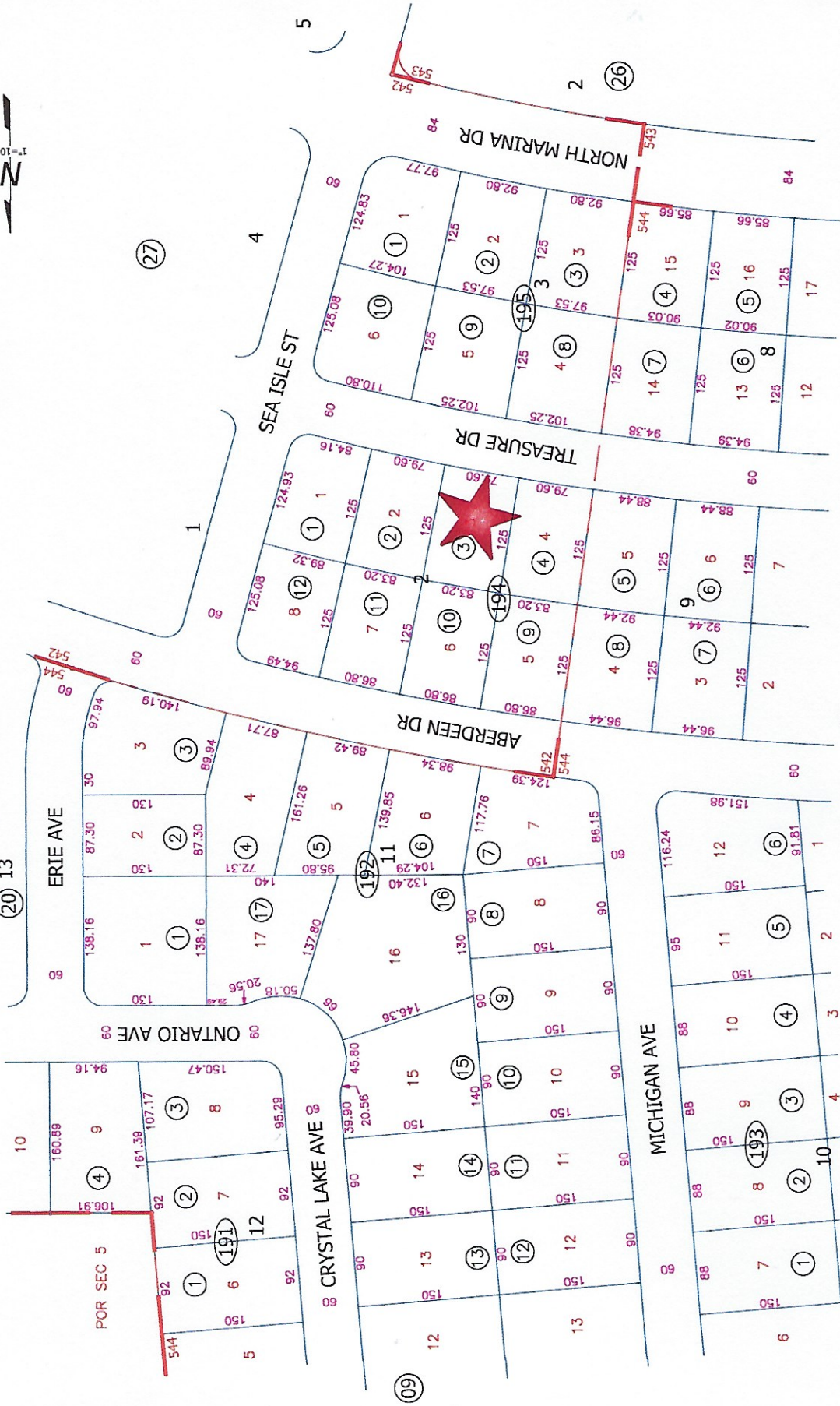


POR. TRACT 542 & 544
POR SEC 5 T10S, R10E
FM 4-53 & 5-61

Tax Area Code
82-003

8-19



DISCLAIMER:
THIS IS NOT AN OFFICIAL MAP.
THIS MAP WAS CREATED FOR THE IMPERIAL COUNTY
ASSESSOR, FOR THE SOLE PURPOSE OF AIDING IN
THE PERFORMANCE OF THE DUTIES OF THE ASSESSOR.
ANY ERRORS OR OMISSIONS IN THIS MAP ARE NOT
THE RESPONSIBILITY OF THE COUNTY OF IMPERIAL
OR THE ASSESSOR. (REV. & TAX. CODE SEC.327)

11-6-09 MF
12-04-74 A.K.

Assessor's Map Bk.08-Pg.19
County of Imperial, Calif.