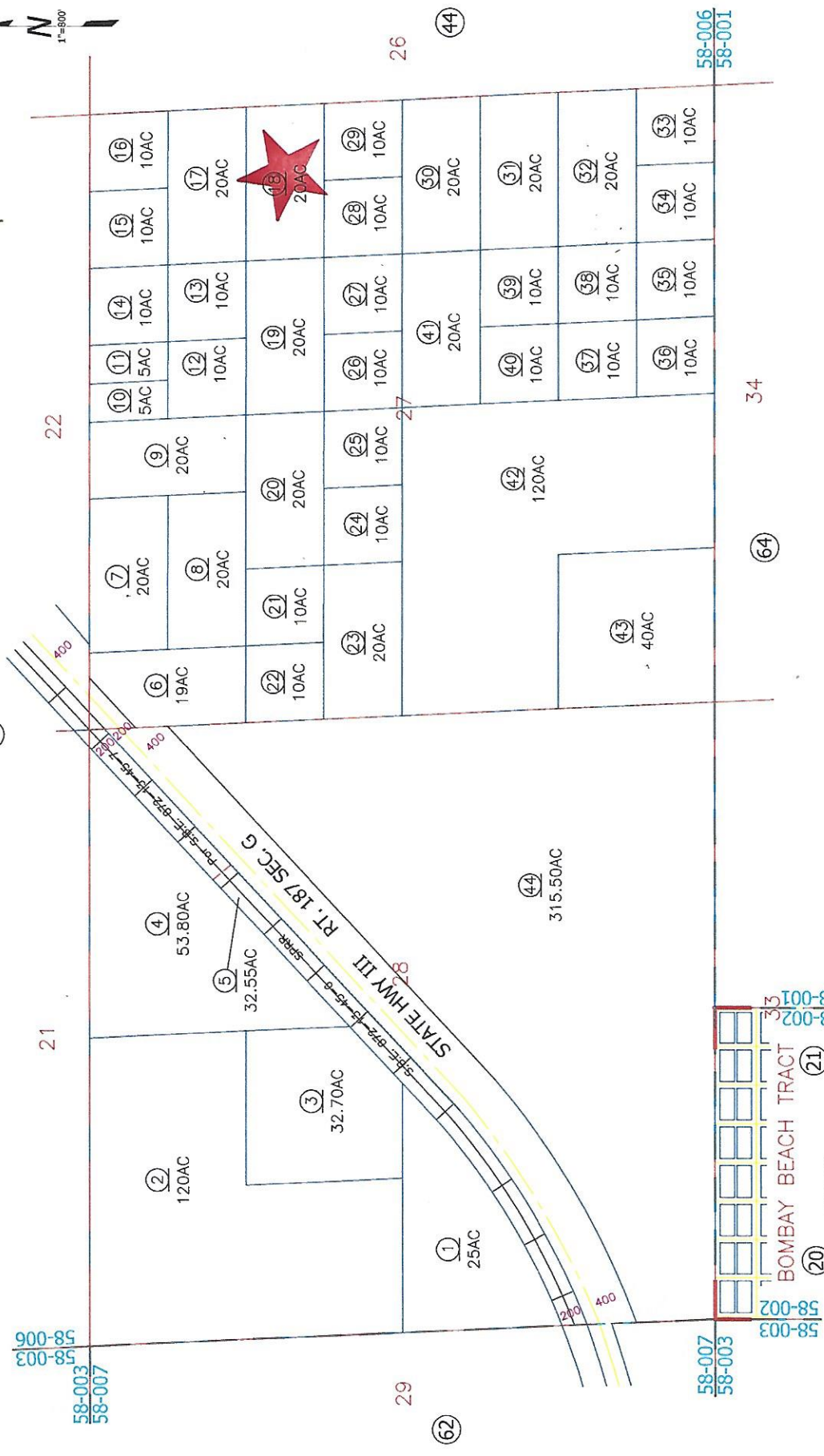


2-52

Tax Area Code  
58-006

SEC. 27 & 28 T9S, R12E



DISCLAIMER:  
 THIS IS NOT AN OFFICIAL MAP.  
 THIS MAP WAS CREATED FOR THE IMPERIAL COUNTY  
 ASSESSOR, FOR THE SOLE PURPOSE OF AIDING IN  
 THE PERFORMANCE OF THE DUTIES OF THE ASSESSOR.  
 ANY ERRORS OR OMISSIONS IN THIS MAP ARE NOT  
 THE RESPONSIBILITY OF THE COUNTY OF IMPERIAL  
 OR THE ASSESSOR. (REV. & TAX CODE SEC. 327)

Assessor's Map Bk. 02-Pg. 52  
 County of Imperial, Calif.



FROM 2-17  
 3-31-76 I J