

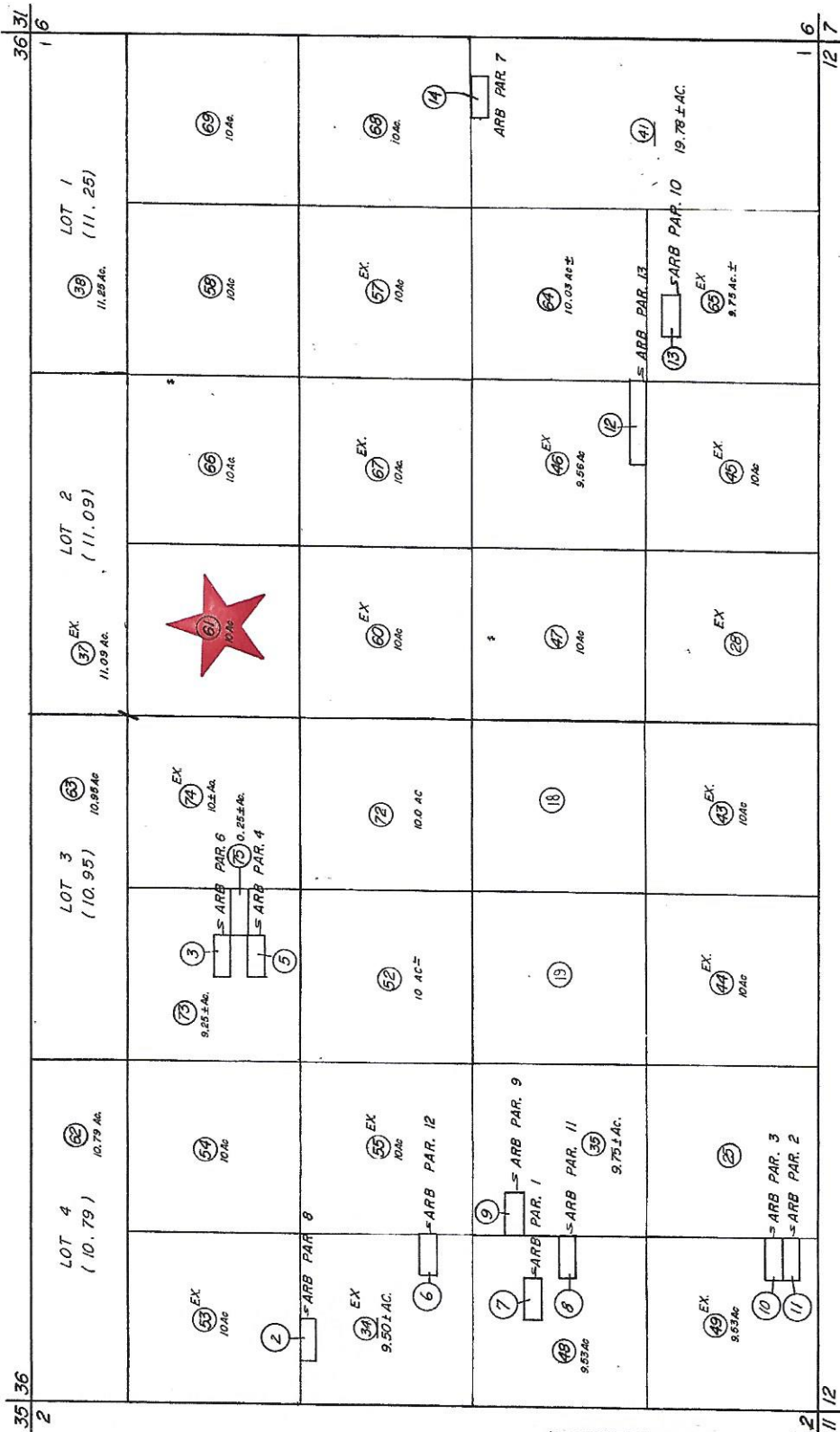
27-37-6

859-33

T. C. A. 6200

SEC. 1, T8S. R. 15E.

(12)



BK 850

DATE	OLD No.	NEW No.
7-7-72	029	8-9-05
7-8-72	1031	59-57-52
7-9-72	053	57-57-55
7-20-72	051	58-58-51
10/72	36	62-63
5/73	42	64-65
5/73	59	66-67
1/75	56	68-69
4/76	60	71-72
5/76	4, 51	73
8/76	71	74-75

DATE	OLD No.	NEW No.
7/68	1	15-16-17
3/68	16	18-19-20
3/69	17	21, 22
4-7-69	18	23, 24, 25
4-25	21	26, 27, 28
4/69	22	29, 30, 31
7/69	23	32, 33
7/69	24	34, 35
2/70	25	36, 37, 38
3/70	26	39, 40, 41
5/70	27	42, 43, 44
7/70	28	45, 46, 47
7/72	29	48, 49, 50
7/72	30	51, 52, 53

ASSESSOR'S MAP BK. 659 PG. 33 RIVERSIDE COUNTY, CALIF.

JULY 1966

(25)

(26)