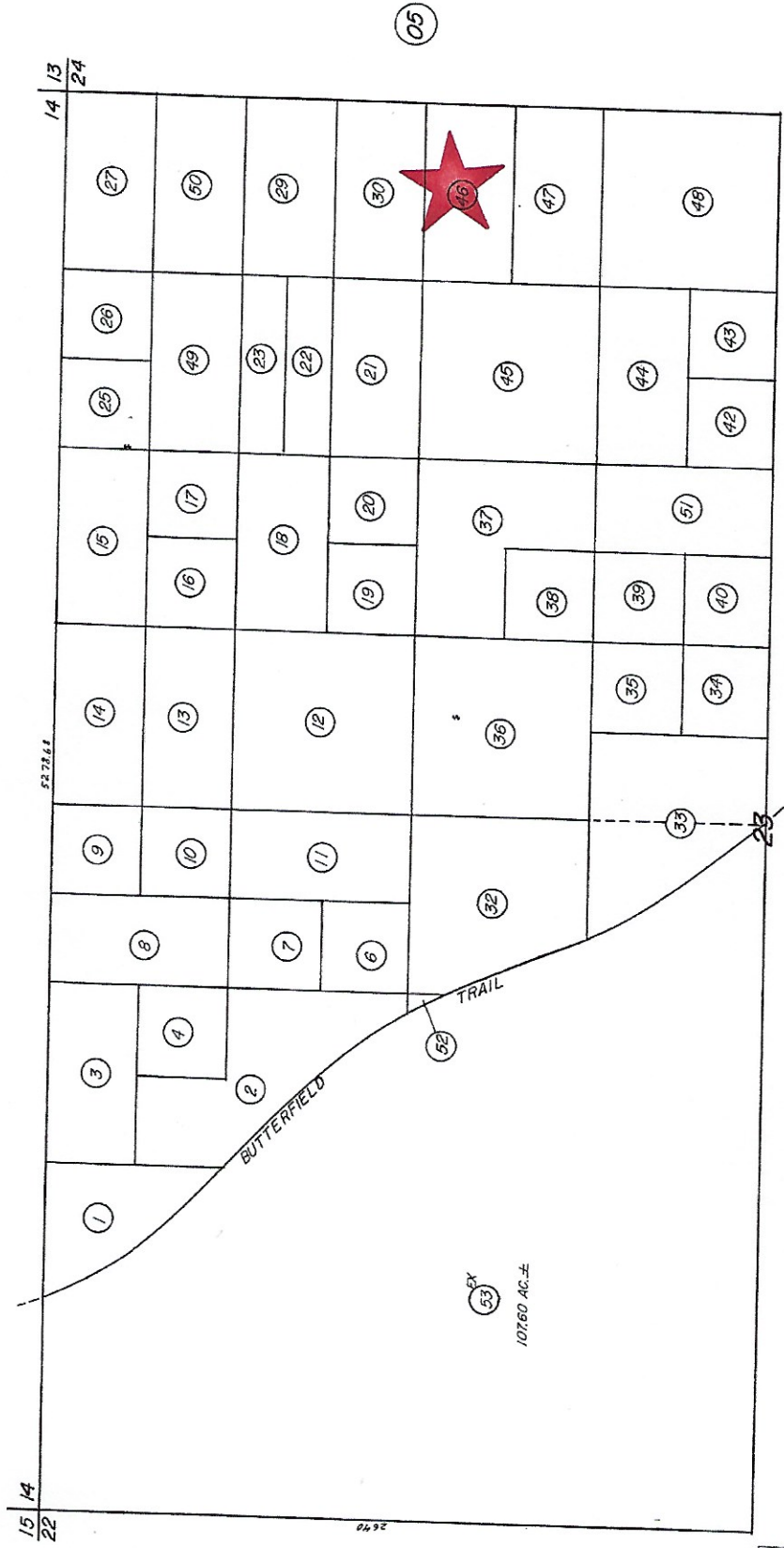


27-37-10

860-18

T. C. A. 6200

N<sup>2</sup> SEC. 23, T. 8S. R. 16E.



DATE	OLD NO.	NEW NO.
5/17/73	805	823
"	805	824
"	805	825
"	805	826
"	805	827
"	805	828
"	805	829
"	805	830
"	805	831
"	805	832
"	805	833
"	805	834
"	805	835
"	805	836
"	805	837
"	805	838
"	805	839
"	805	840
"	805	841
"	805	842
"	805	843
"	805	844
"	805	845
"	805	846
"	805	847
"	805	848
"	805	849
"	805	850
"	805	851
"	805	852

ASSESSOR'S MAP BK. 860 PG. 18  
RIVERSIDE COUNTY, CALIF. A.

JUNE 1966