

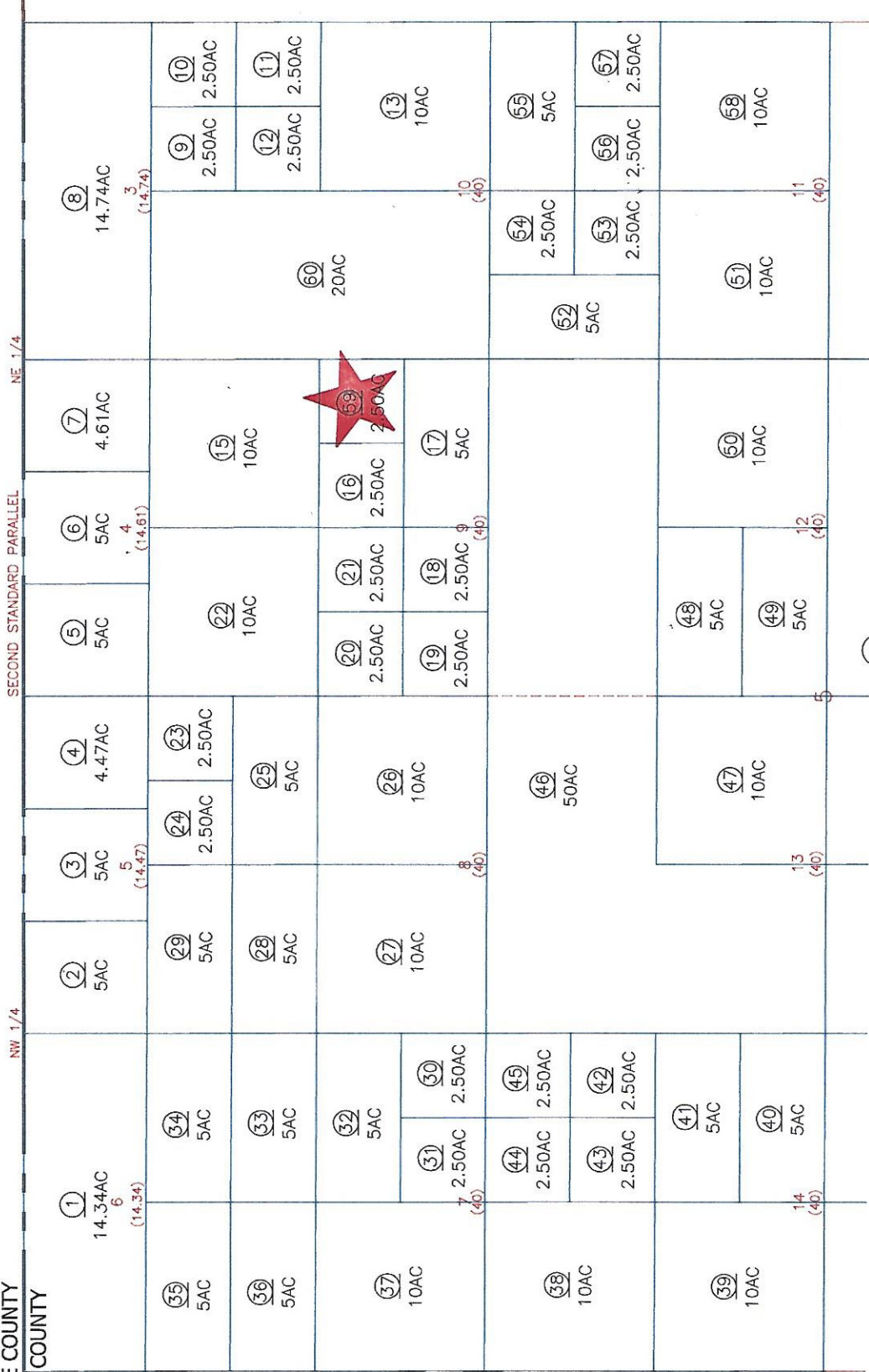
N1/2 SEC.5 T9S, R18E

Tax Area Code  
94-002

60-05



RIVERSIDE COUNTY  
IMPERIAL COUNTY



DISCLAIMER:  
THIS IS NOT AN OFFICIAL MAP.  
THIS MAP WAS CREATED FOR THE IMPERIAL COUNTY  
ASSESSOR, FOR THE SOLE PURPOSE OF AIDING IN  
THE PERFORMANCE OF THE DUTIES OF THE ASSESSOR.  
ANY ERRORS OR OMISSIONS IN THIS MAP ARE NOT  
THE RESPONSIBILITY OF THE COUNTY OF IMPERIAL  
OR THE ASSESSOR. (REV. & TAX. CODE SEC.327)

From 5-70  
7-6-82 RW  
2-22-90 LS



Assessor's Map Bk.60-Pg.05  
County of Imperial, Calif.