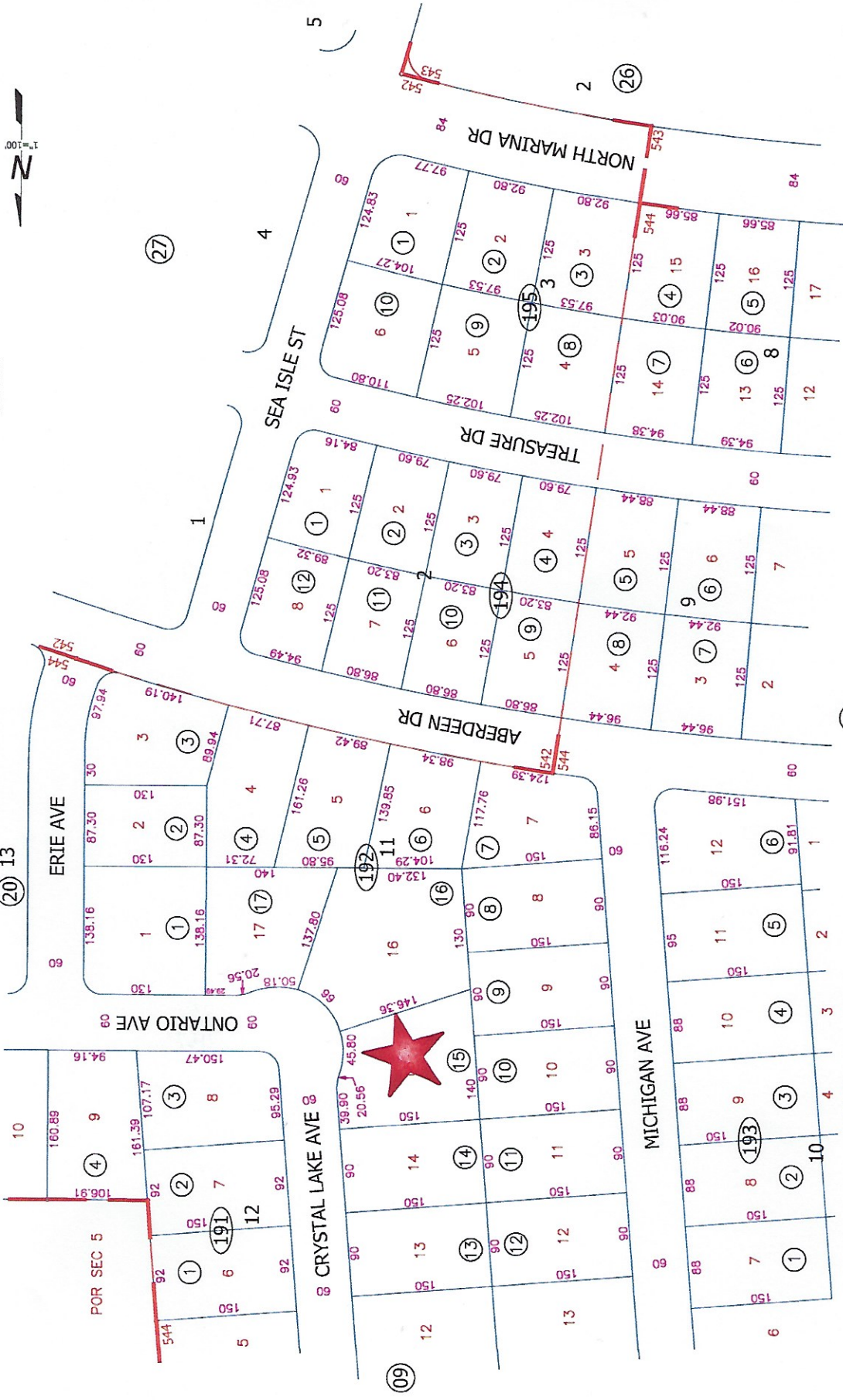


POR. TRACT 542 & 544  
 POR SEC 5 T10S, R10E  
 FM 4-53 & 5-61

Tax Area Code  
 82-003

8-19



DISCLAIMER:  
 THIS IS NOT AN OFFICIAL MAP.  
 THIS MAP WAS CREATED FOR THE IMPERIAL COUNTY  
 ASSESSOR, FOR THE SOLE PURPOSE OF AIDING IN  
 THE PERFORMANCE OF THE DUTIES OF THE ASSESSOR.  
 ANY ERRORS OR OMISSIONS IN THIS MAP ARE NOT  
 THE RESPONSIBILITY OF THE COUNTY OF IMPERIAL  
 OR THE ASSESSOR. (REV. & TAX. CODE SEC.327)

Assessor's Map Bk.08-Pg.19  
 County of Imperial, Calif.

11-6-09 MF  
 12-04-74 A.K.