

7-34

Tax Area Code
82-003

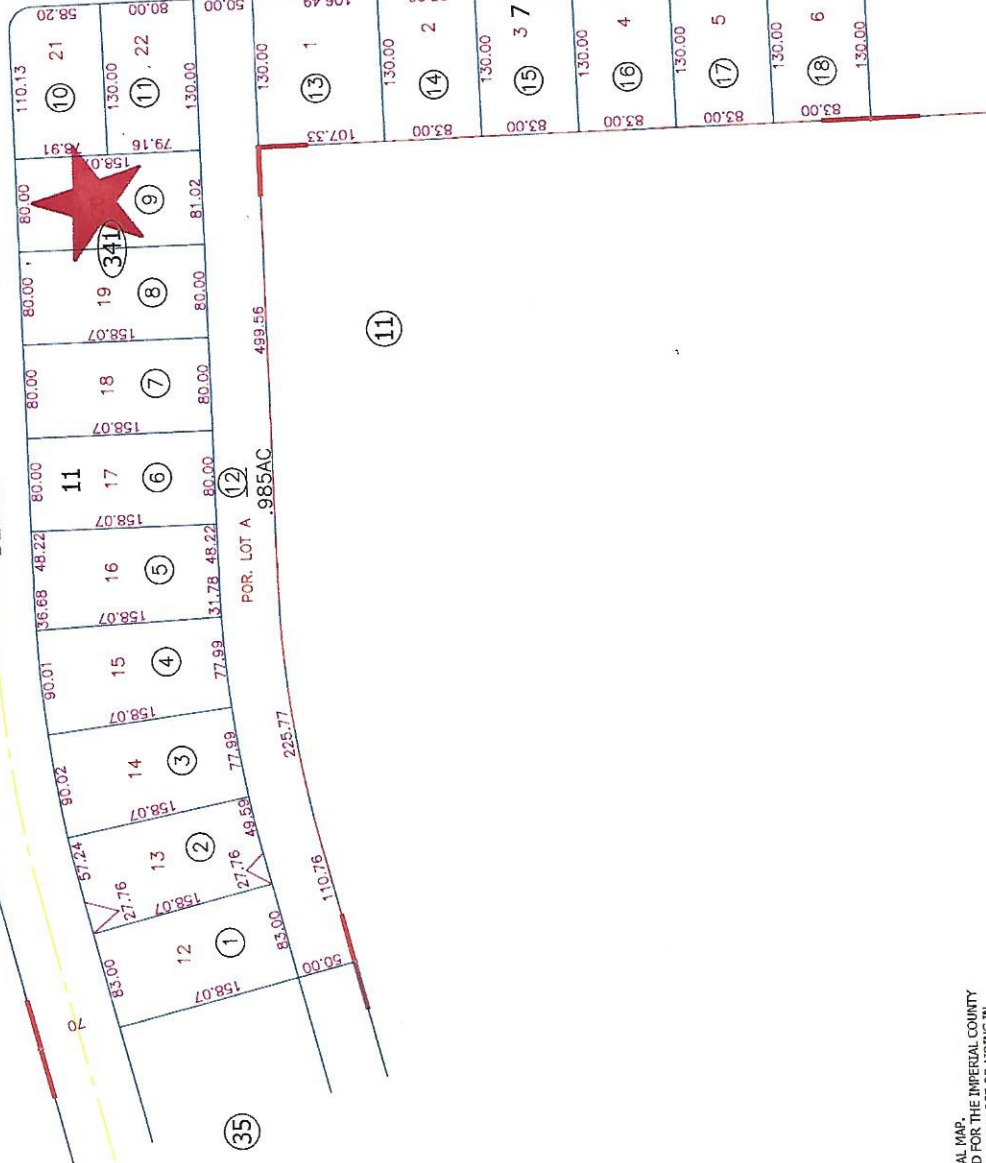
POR. TRACT 701
POR. SEC 25 T.10S., R.9E.
F.M. 8-30

(11)

NE cor. of Sec. 25
T1:573



DIAMOND AVE



(11)

(11)

(11)

Bk. 14
Pg. 27

DISCLAIMER:
THIS IS NOT AN OFFICIAL MAP.
THIS MAP WAS CREATED FOR THE IMPERIAL COUNTY
ASSESSOR, FOR THE SOLE PURPOSE OF AIDING IN
THE PERFORMANCE OF THE DUTIES OF THE ASSESSOR.
ANY ERRORS OR OMISSIONS IN THIS MAP ARE NOT
THE RESPONSIBILITY OF THE COUNTY OF IMPERIAL
OR THE ASSESSOR. (REV. & TAX CODE SEC. 327)



Assessor's Map Bk. 07-Pg. 34
County of Imperial, Calif.

(8)

(33)

(35)

(11)

(11)